

Hansons Reach

Milton Crescent, Stewartby, Bedfordshire, MK43 9SX



Hansons Reach is a new development with 2 & 3 bed houses available through shared ownership, located in the village of Stewartby, Bedfordshire.

Key Features:

- White bathroom suite and thermostatic shower
- Carpet throughout living areas
- Vinyl flooring in kitchen and bathroom
- Gas central heating
- Enclosed garden with turf and shed
- 2 allocated parking spaces
- Fully fitted kitchen with integrated oven and hob
- Freestanding washer dryer
- Freestanding fridge/freezer



WE ARE SELLING THIS DEVELOPMENT THROUGH


Paradigm Housing, 1 Glory Park Avenue, Wooburn Green, HP10 0DF

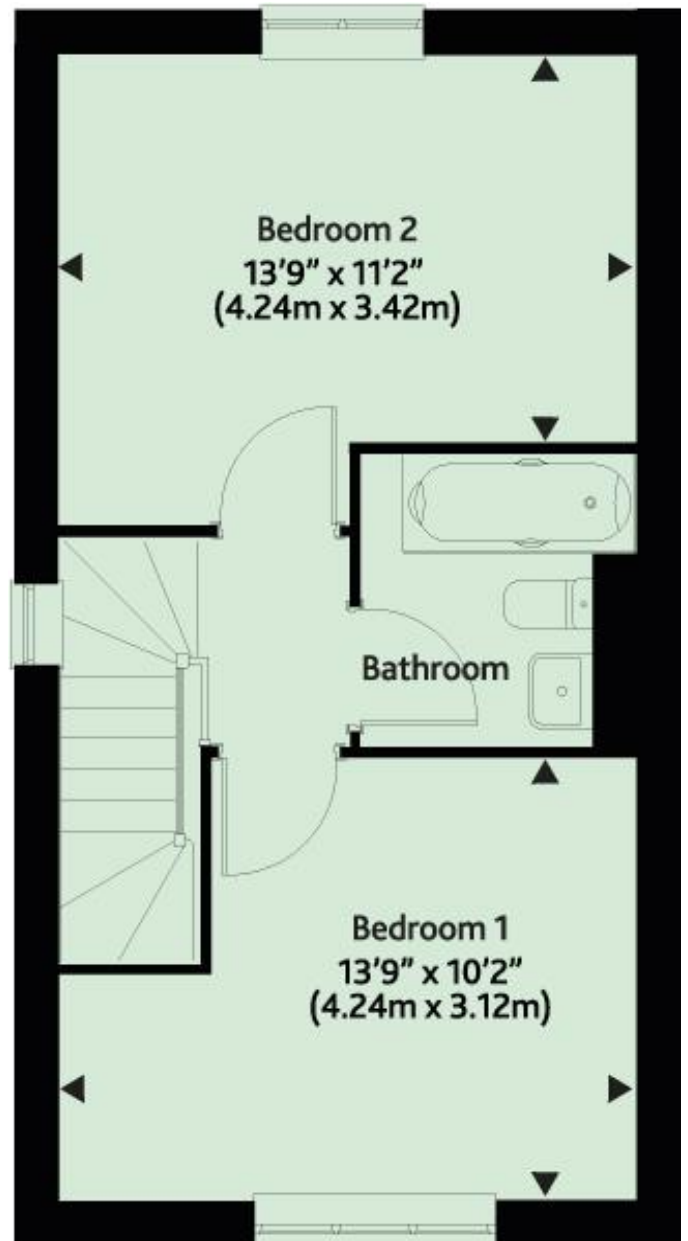
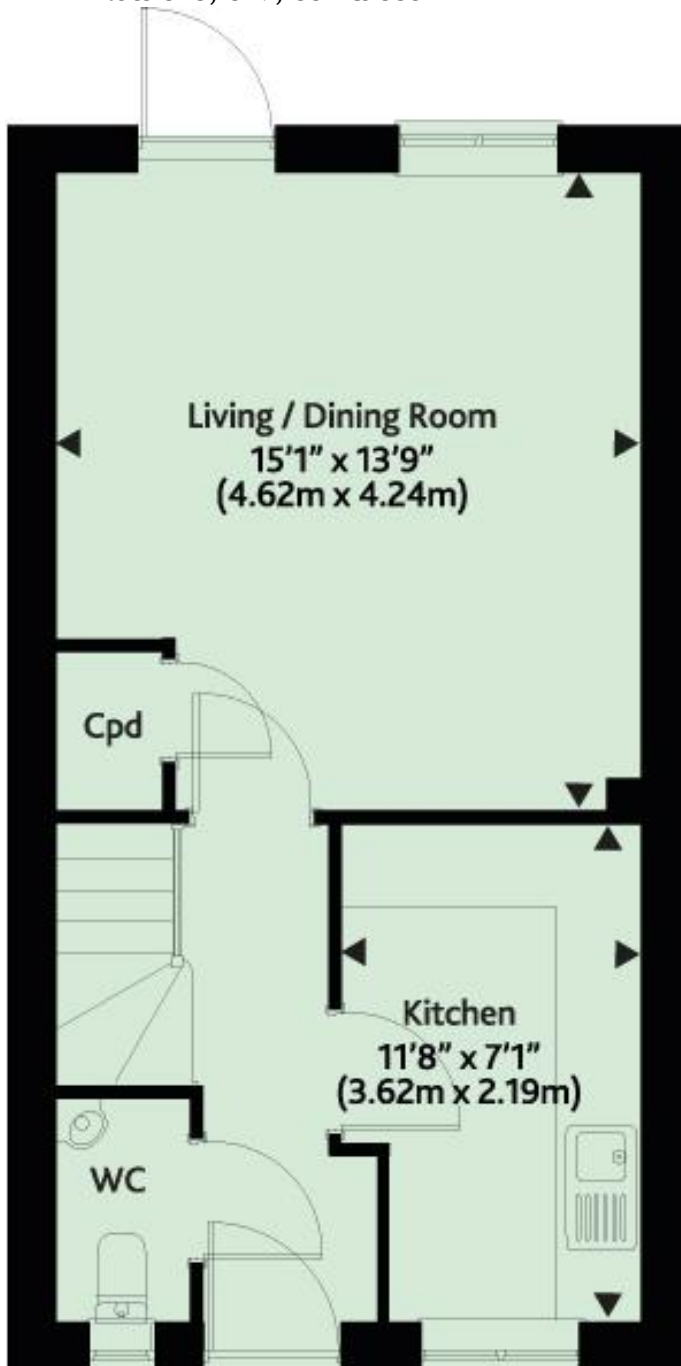
Tel: 0845 3374877

Disclaimer:

Please note that, due to varying stages of construction, photographs may be of similar properties and are intended to give an idea of the finish of the properties being built.

Floorplans

 **2 Bed Houses**
Plots 548, 549, 552 & 553



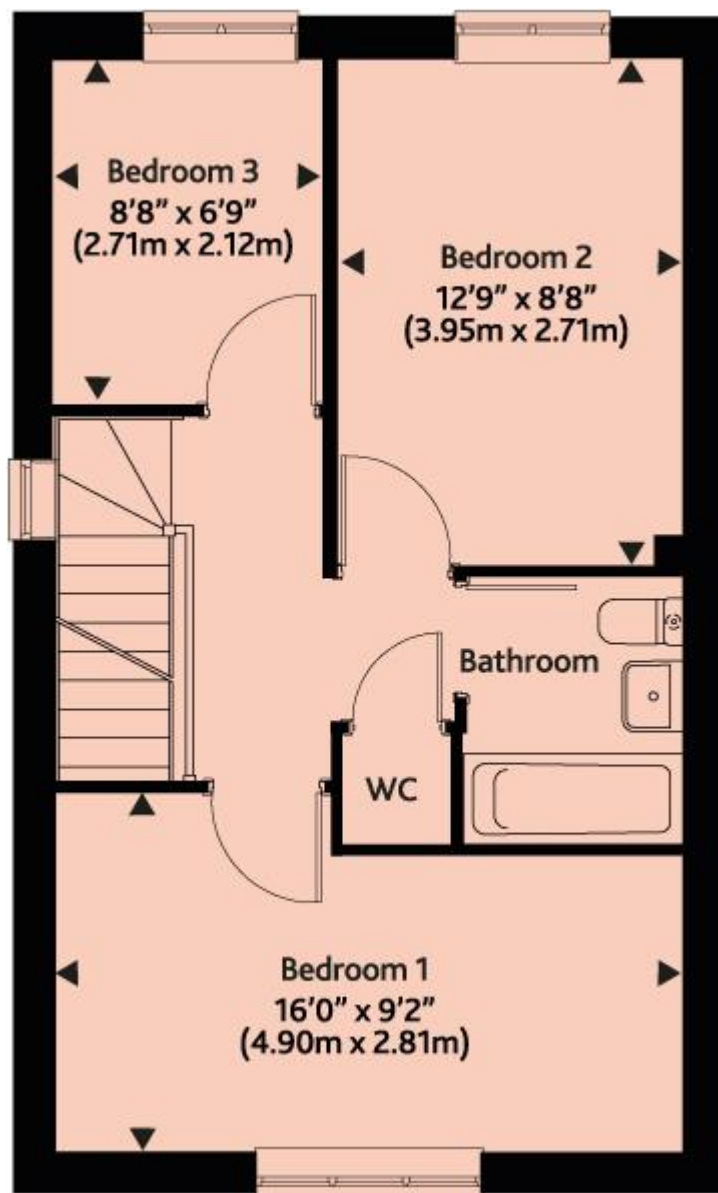
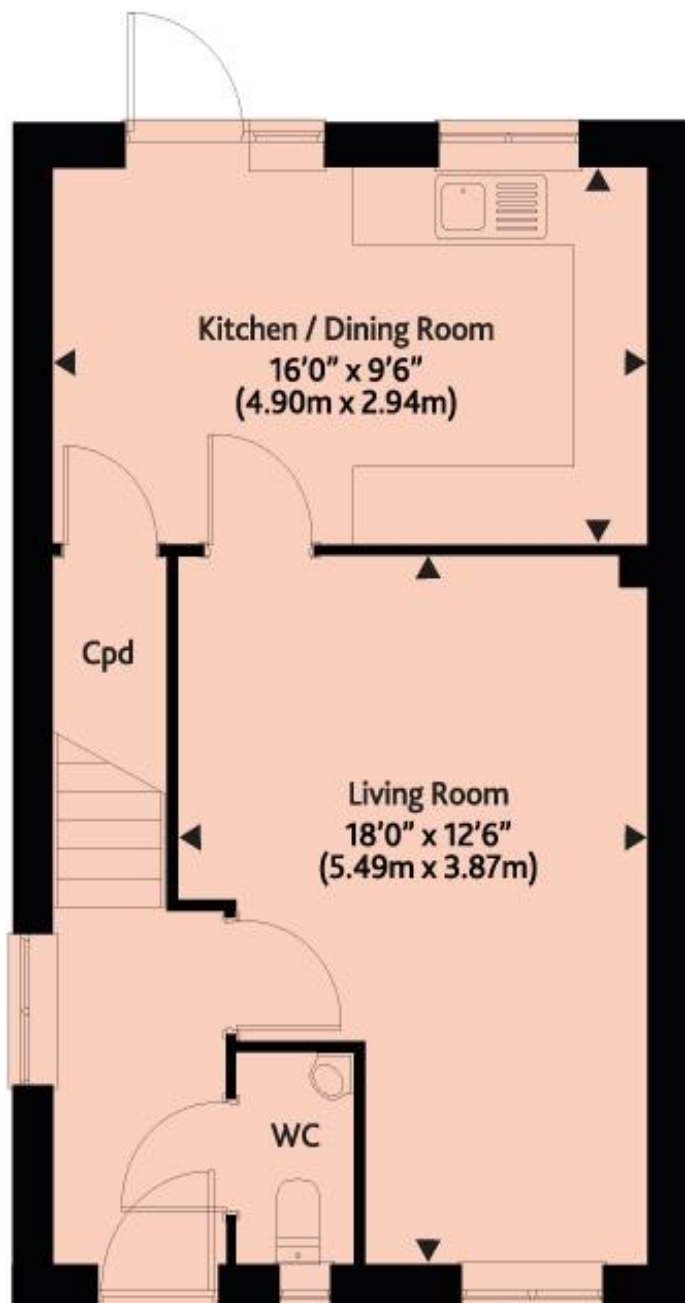
Plots 549 & 553 are handed

Floorplans



3 Bed Houses

Plots 550, 551, 559, 560, 563 & 564



Plots 551, 560 & 564 are handed



For more information
0845 337 4877
www.paradigmliving.co.uk

These particulars do not constitute any part of an offer or contract. Any intended purchasers must satisfy themselves as to the correctness of each of the statements contained in these particulars. All floor layouts maybe subject to changes. The dimensions given on the plan are subject to minor variations intended for guidance only and are not be used for carpets, appliances or items of furniture.

Site Map

